

# Investor Information

(As of March 31, 2001)

## Corporate Head Office

TOYOTA INDUSTRIES CORPORATION  
 (Effective August 1, 2001)  
 2-1, Toyoda-cho, Kariya-shi, Aichi-ken 448-8671, Japan  
 Telephone: +81-(0)566-22-2511  
 Facsimile: +81-(0)566-27-5650

## Date of Establishment

November 18, 1926

## Common Stock

Par value: ¥50  
 Authorized: 1,091,245,000 shares  
 Issued and outstanding: 313,296,225 shares

## Stock Exchange Listings

Tokyo, Osaka and Nagoya  
 (Ticker Code: 6201)

## Number of Shareholders

8,626

## Independent Accountants

ChuoAoyama Audit Corporation  
 3-28-12, Meieki, Nakamura-ku, Nagoya-shi, Aichi-ken  
 450-8565, Japan

## Transfer Agent

The Toyo Trust and Banking Company, Limited  
 1-4-3, Marunouchi, Chiyoda-ku, Tokyo-to 100-0005, Japan  
 Telephone: +81- (0)3-3287-2211

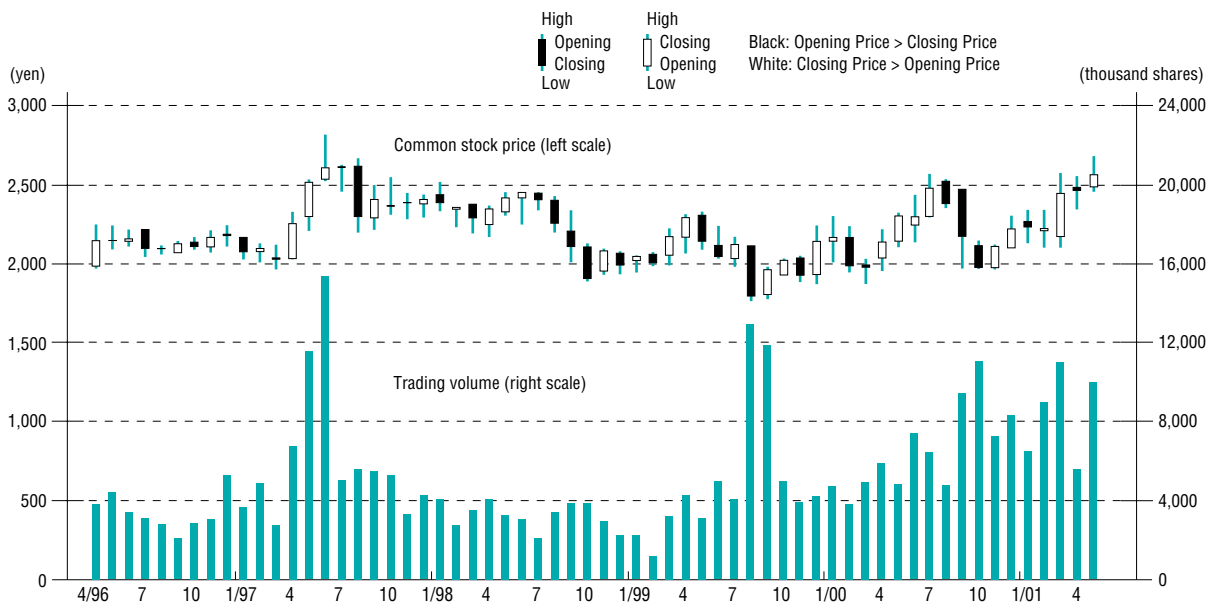
## Major Shareholders

|  | % of<br>Ownership |
|--|-------------------|
| TOYOTA MOTOR CORPORATION                                 | 24.67             |
| DENSO CORPORATION  | 7.10              |
| Nippon Life Insurance Company                            | 4.75              |
| The Chuo Mitsui Trust and Banking Company, Limited       | 4.58              |
| The Sakura Bank, Limited <sup>1</sup>                    | 4.34              |
| The Tokai Bank, Limited <sup>2</sup>                     | 4.05              |
| The Sanwa Bank, Limited <sup>2</sup>                     | 2.88              |
| Mitsui Marine and Fire Insurance Co., Ltd.               | 2.51              |
| Towa Real Estate Co, Ltd.                                | 2.46              |
| The Toyo Trust and Banking Company, Limited <sup>2</sup> | 2.29              |

<sup>1</sup> On April 1, 2001, The Sakura Bank, Limited and The Sumitomo Bank, Limited merged to form Sumitomo Mitsui Banking Corporation. Together, they held 4.39% of the then issued shares.

<sup>2</sup> On April 2, 2001, The Sanwa Bank, Limited, The Tokai Bank, Limited and The Toyo Trust and Banking Company, Limited integrated their businesses under the newly established holding company, UFJ Holdings, Inc. Together, they held 9.22% of the then issued shares.

## Common Stock Price & Trading Volume (Tokyo Stock Exchange)



### **Publications**

Our *Corporate Brochure* and *Environmental Report* are available in both English and Japanese upon written request to the Advertising & Public Affairs Department at our Corporate Head Office.

### **Internet Home Page**

Updated information is published regularly on our website. (<http://www.toyota-industries.com/>)

### **Further Information**

For further information, please write to the Planning Section of the Accounting & Finance Department or the Corporate Communications Section of the Advertising & Public Affairs Department at our Corporate Head Office.



## TOYOTA INDUSTRIES CORPORATION

2-1, Toyoda-cho, Kariya-shi, Aichi-ken 448-8671, Japan

Telephone: +81-(0)566-22-2511 Facsimile: +81-(0)566-27-5650

URL: <http://www.toyota-industries.com/>

This annual report is printed on officially certified recycled and Kenaf paper (100% tree-free paper) using soy ink to minimize the impact on the environment.



Printed in Japan