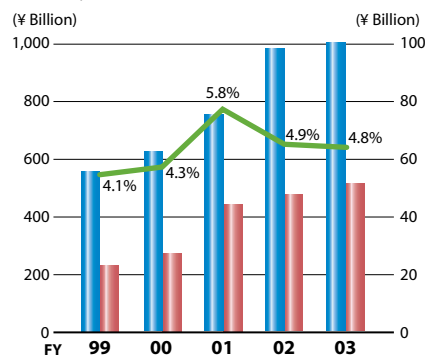


Toyota Industries in Figures

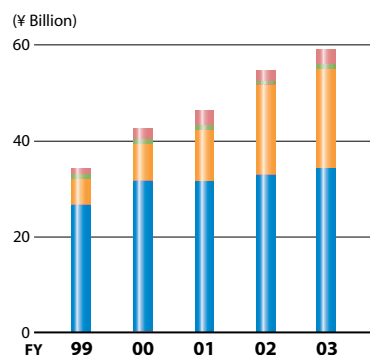
Net Sales, Ordinary Income and Ordinary Income Ratio



	Millions of yen				
	1999	2000	2001	2002	2003
Net sales	¥558,876	¥625,773	¥767,383	¥980,163	¥1,069,219
Ordinary income	23,172	27,162	44,525	47,866	51,375
Ordinary income ratio (%)	4.1	4.3	5.8	4.9	4.8

■ Net sales (left) ■ Ordinary income (right) — Ordinary income ratio

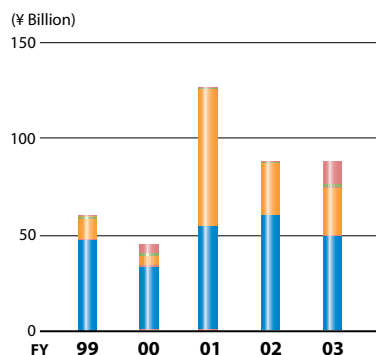
Depreciation and Amortization



	Millions of yen				
	1999	2000	2001	2002	2003
Depreciation and amortization:	¥34,380	¥42,752	¥46,454	¥55,174	¥59,154
Automobile Segment	26,518	31,707	31,764	33,403	34,157
Materials Handling Equipment Segment	5,548	7,751	10,766	18,882	20,801
Textile Machinery Segment	1,024	978	1,034	797	1,006
Others Segment (including corporate or elimination)	1,290	2,316	2,890	2,092	3,190

■ Automobile ■ Materials Handling Equipment ■ Textile Machinery ■ Others

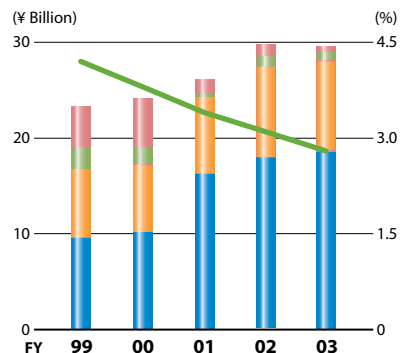
Capital Expenditures



	Millions of yen				
	1999	2000	2001	2002	2003
Capital expenditures:	¥60,468	¥44,746	¥127,273	¥88,320	¥87,559
Automobile Segment	47,635	33,058	54,734	61,023	49,380
Materials Handling Equipment Segment	11,691	5,426	70,673	26,337	24,350
Textile Machinery Segment	663	1,042	320	523	2,164
Others Segment (including corporate or elimination)	479	5,220	1,546	437	11,665

■ Automobile ■ Materials Handling Equipment ■ Textile Machinery ■ Others

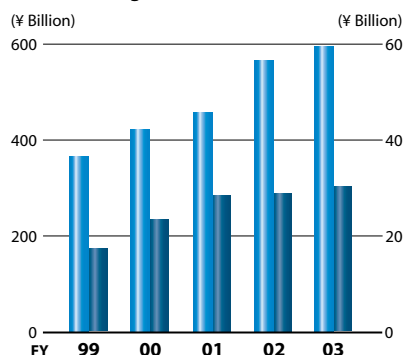
R&D Expenses and R&D Expenses to Net Sales Ratio



	Millions of yen				
	1999	2000	2001	2002	2003
R & D expenses:	¥23,231	¥24,062	¥26,196	¥29,985	¥29,705
Automobile Segment	9,454	10,401	16,275	18,060	18,748
Materials Handling Equipment Segment	7,348	6,694	7,908	9,246	9,298
Textile Machinery Segment	2,243	1,905	615	1,335	1,053
Others Segment (including corporate or elimination)	4,186	5,062	1,398	1,344	606
R & D expenses to net sales ratio (%)	4.2	3.8	3.4	3.1	2.8

■ Automobile ■ Materials Handling Equipment ■ Textile Machinery ■ Others (left)
— R & D expenses to net sales ratio (right)

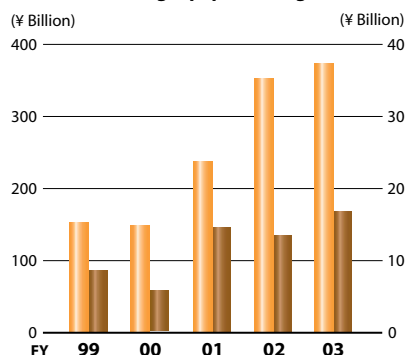
Net Sales and Operating Income of Automobile Segment



	Millions of yen				
	1999	2000	2001	2002	2003
Net sales of Automobile Segment	¥364,269	¥423,413	¥457,631	¥563,599	¥595,460
Operating income of Automobile Segment	17,398	24,428	28,525	28,960	30,108

■ Net sales (left) ■ Operating income (right)

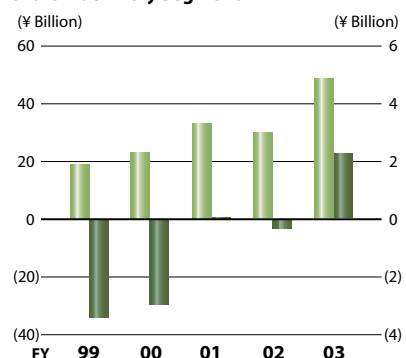
Net Sales and Operating Income of Materials Handling Equipment Segment



	Millions of yen				
	1999	2000	2001	2002	2003
Net sales of Materials Handling Equipment Segment	¥151,370	¥149,085	¥236,502	¥353,043	¥373,008
Operating income of Materials Handling Equipment Segment	8,452	5,750	14,547	13,366	16,175

■ Net sales (left) ■ Operating income (right)

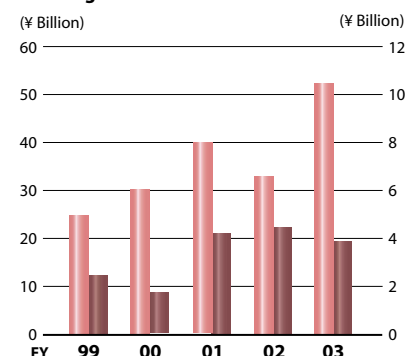
Net Sales and Operating Income (loss) of Textile Machinery Segment



	Millions of yen				
	1999	2000	2001	2002	2003
Net sales of Textile Machinery Segment	¥18,947	¥23,135	¥33,238	¥30,705	¥48,740
Operating income (loss) of Textile Machinery Segment	(3,455)	(2,972)	35	(391)	2,309

■ Net sales (left) ■ Operating income (loss) (right)

Net Sales and Operating Income of Others Segment



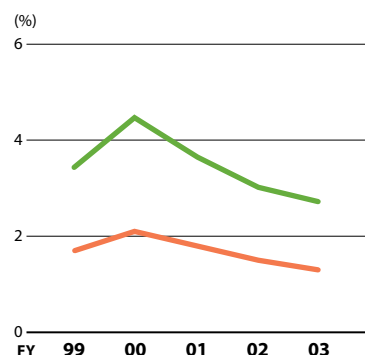
	Millions of yen				
	1999	2000	2001	2002	2003
Net sales of Others Segment	¥24,290	¥30,140	¥40,012	¥32,816	¥52,011
Operating income of Others Segment	2,419	1,661	4,197	4,395	3,886

■ Net sales (left) ■ Operating income (right)

Toyota Industries in Figures

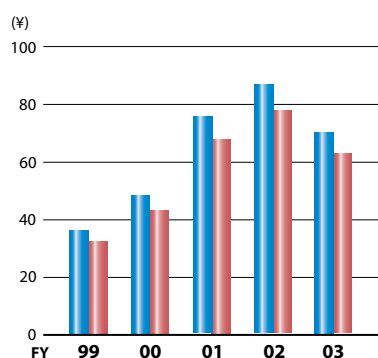
(Years ended March 31)

ROE and ROA



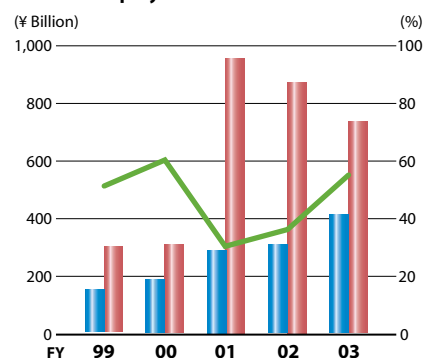
	%				
	1999	2000	2001	2002	2003
Return on equity (ROE)	3.4	4.4	3.6	3.0	2.7
Return on assets (ROA)	1.7	2.1	1.8	1.5	1.3

Net Income per Share



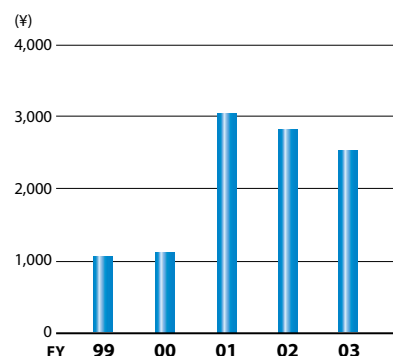
	Yen				
	1999	2000	2001	2002	2003
Net income per share — basic	¥36.30	¥48.32	¥75.90	¥87.28	¥70.19
Net income per share — diluted	32.62	43.18	67.77	78.26	62.90

Interest-Bearing Debt, Shareholders' Equity and Debt/Equity Ratio

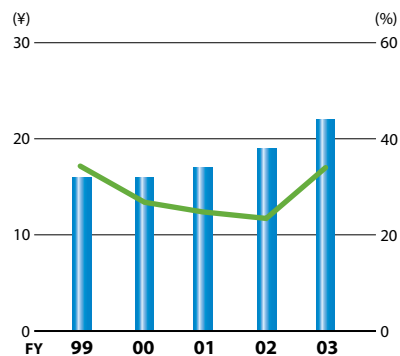


	Millions of yen				
	1999	2000	2001	2002	2003
Interest-bearing debt	¥155,368	¥191,371	¥291,688	¥315,354	¥410,622
Shareholder's equity	301,158	316,293	951,298	878,812	738,868
Debt/equity ratio (%)	51.6	60.5	30.7	35.9	55.6

Shareholders' Equity per Share

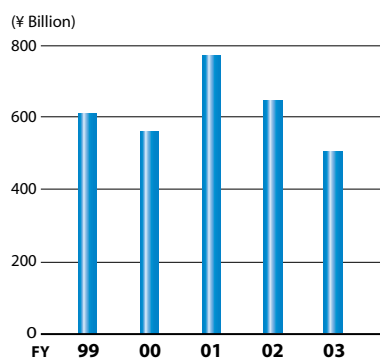


	Yen				
	1999	2000	2001	2002	2003
Shareholders' equity per share	¥1,063.05	¥1,116.62	¥3,036.77	¥2,809.54	¥2,522.52

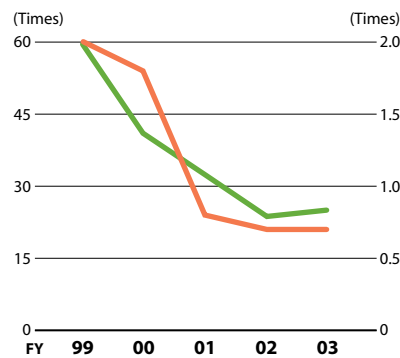
Cash Dividends per Share and Payout Ratio

	Yen				
	1999	2000	2001	2002	2003
Cash dividends per share	¥16.00	¥16.00	¥17.00	¥19.00	¥22.00
Payout ratio (%)	34.1	26.4	24.4	23.8	34.0

■ Cash dividends per share (left) — Payout ratio (right)

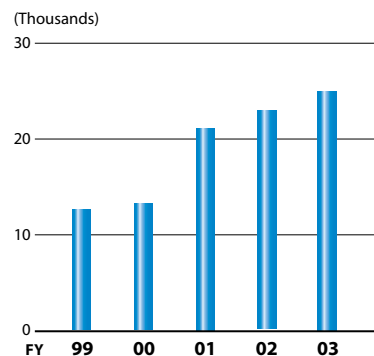
Market Capitalization

	Millions of yen				
	1999	2000	2001	2002	2003
Market capitalization	¥613,336	¥561,138	¥767,487	¥649,052	¥513,824

PER and PBR

	Times				
	1999	2000	2001	2002	2003
Price/earnings ratio (PER)	59.6	41.0	32.3	23.8	25.0
Price/bookvalue ratio (PBR)	2.0	1.8	0.8	0.7	0.7

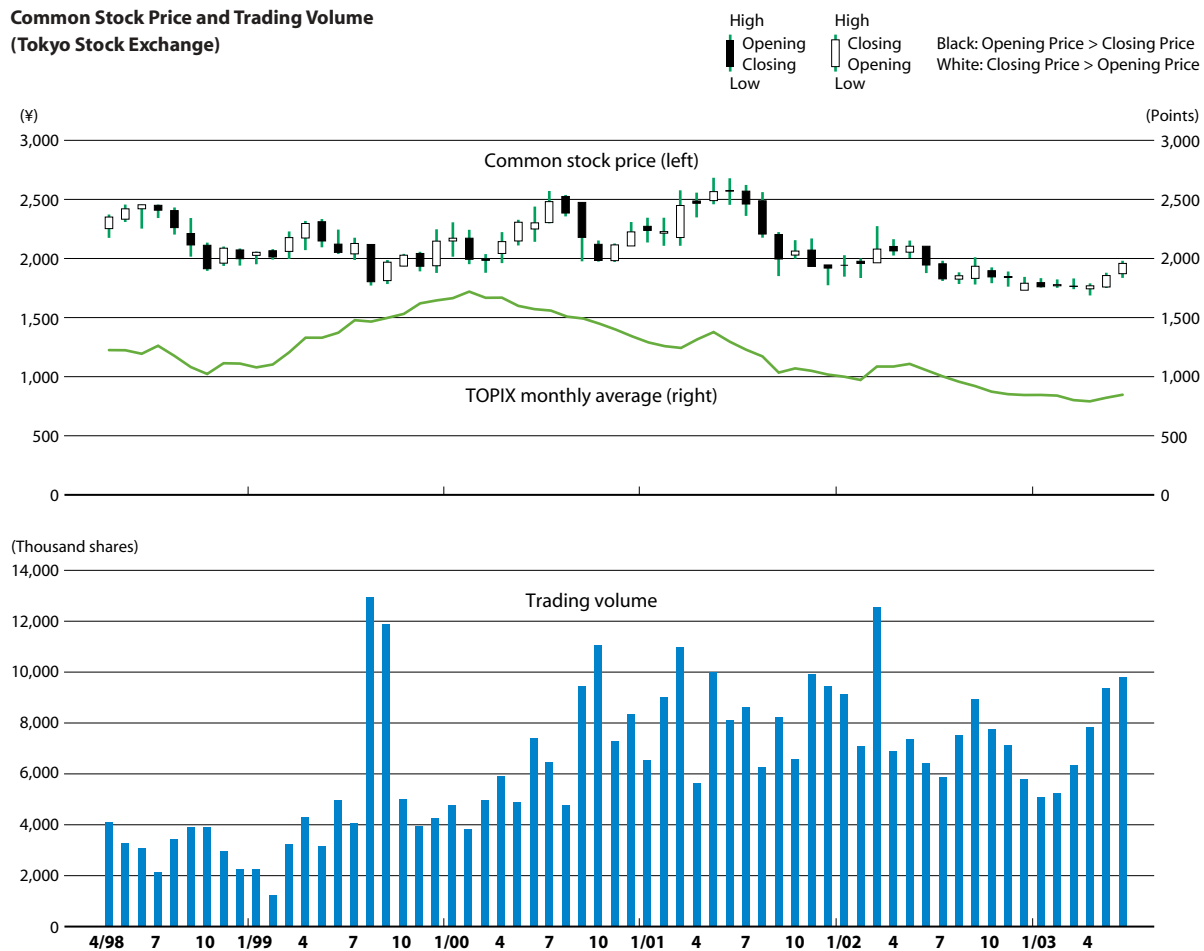
— PER (left) — PBR (right)

Number of Employees

	Persons				
	1999	2000	2001	2002	2003
Number of employees	12,797	13,132	21,118	23,056	25,030

Toyota Industries in Figures

Common Stock Price and Trading Volume (Tokyo Stock Exchange)



Note: TOPIX (Tokyo Stock Price Index) is an intellectual property that belongs to the Tokyo Stock Exchange, Inc. ("TSE"). All the rights to calculate, publicize, disseminate, and use the index value are reserved by the TSE.

(Years ended March 31)

	Yen				
	1999	2000	2001	2002	2003
Common stock price:					
High	¥2,455	¥2,350	¥2,580	¥2,770	¥2,165
Low	1,880	1,761	1,922	1,766	1,725
At year-end	2,165	1,981	2,450	2,075	1,755
Annual increase (decrease) (%)	(5.0)	(8.5)	23.7	(15.3)	(15.4)