

Investor Information

(As of March 31, 2006)

Corporate Head Office

TOYOTA INDUSTRIES CORPORATION
2-1, Toyoda-cho, Kariya-shi, Aichi-ken,
448-8671, Japan
Telephone: +81-(0)566-22-2511
Facsimile: +81-(0)566-27-5650

Date of Establishment

November 18, 1926

Common Stock

No par value
Authorized: 1,091,245,000 shares
Issued: 325,840,640 shares

Stock Exchange Listings

Tokyo, Osaka and Nagoya (Ticker Code: 6201)

Number of Shareholders

18,762

Transfer Agent

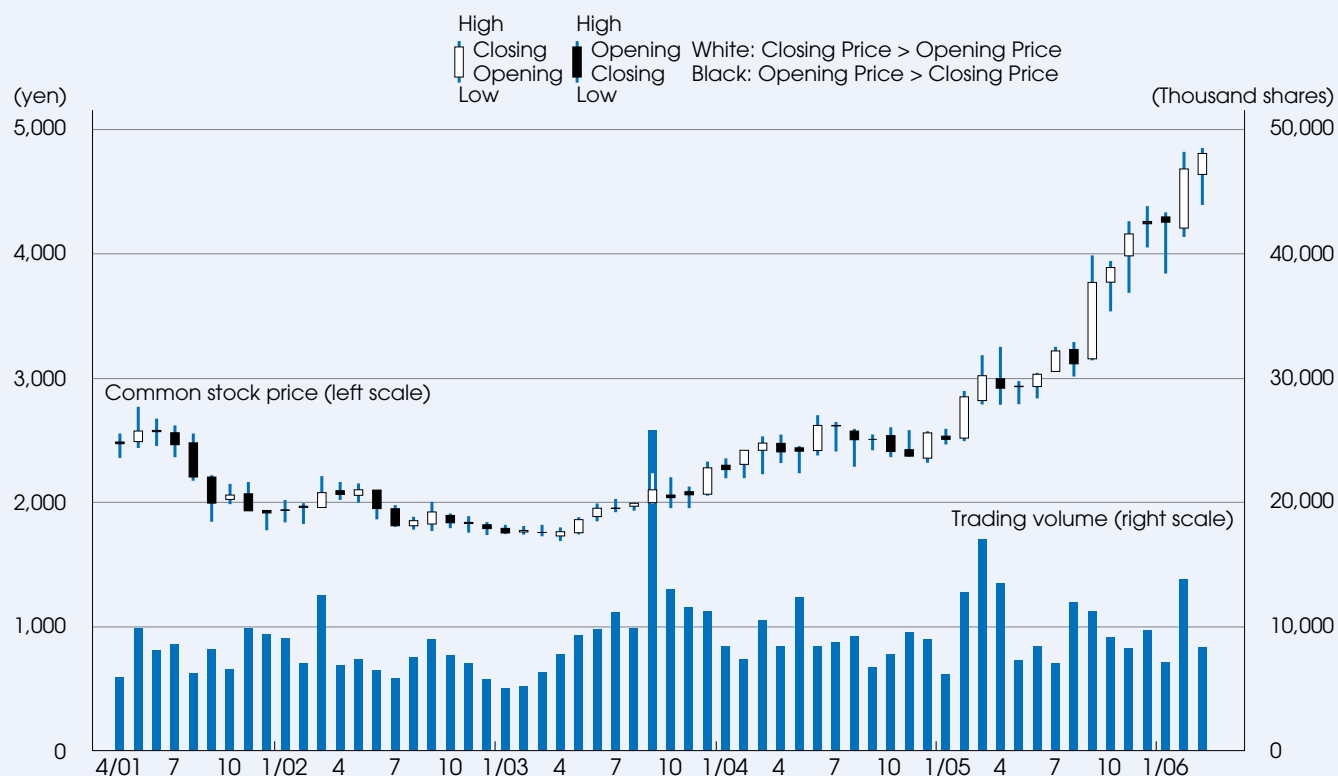
Mitsubishi UFJ Trust and Banking Corporation
1-4-5, Marunouchi, Chiyoda-ku, Tokyo-to, 100-8212, Japan
Telephone: +81-(0)3-3212-1211

Major Shareholders

	% of Voting rights
Toyota Motor Corporation	24.02
DENSO Corporation	9.29
The Master Trust Bank of Japan, Ltd.	6.14
Towa Real Estate Co., Ltd.	4.92
Third Avenue Fund-Custodial Trust Company	4.35
Bank of Bermuda Limited, Hamilton	2.71
Toyota Tsusho Corporation	2.31
State Street Bank and Trust Company	2.28
Nippon Life Insurance Company	2.11
Aisin Seiki Co., Ltd.	2.06

Common Stock Price and Trading Volume

(Tokyo Stock Exchange)



Publications

Our Corporate Brochure and Social & Environmental Report are available in both English and Japanese upon written request to the Public Affairs Department at our Corporate Head Office.

Internet Home Page

Updated information is published regularly on our Web site. (<http://www.toyota-industries.com>)

Further Information

For further information, please write to the Investor Relations Office at our Corporate Head Office.



TOYOTA INDUSTRIES CORPORATION

2-1, Toyoda-cho, Kariya-shi, Aichi-ken 448-8671, Japan
Telephone: +81-(0)566-22-2511 Facsimile: +81-(0)566-27-5650
www.toyota-industries.com

This annual report is printed on recycled paper using soy ink to minimize the impact on the environment.



Printed in Japan