

Financial Highlights

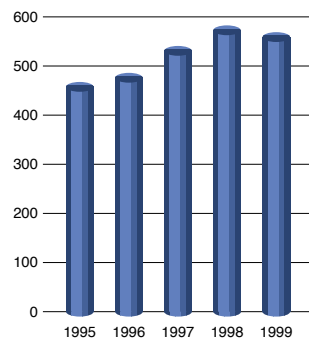
Toyota Automatic Loom Works, Ltd. and its consolidated subsidiaries
 Years ended March 31.

	Millions of yen		% change	Thousands of
	1999	1998		U.S. dollars
FOR THE YEAR				
Net sales	¥558,876	¥572,698	(2.4)	\$4,636,049
Operating income	24,814	32,729	(24.2)	205,839
Net income	10,391	20,491	(49.3)	86,200
Per common share: (in yen or U.S. dollars)				
Net income: Primary	36.30	72.33	(49.8)	0.30
Diluted	32.62	63.48	(48.6)	0.27
Cash dividends	16.00	16.00	0.0	0.13
AT YEAR-END				
Total assets	617,071	593,004	4.1	5,118,793
Total shareholders' equity	301,158	304,097	(1.0)	2,498,200

Note: U.S. dollar amounts have been translated from yen, for convenience only, at the rate of ¥120.55=U.S. \$1, the approximate exchange rate on March 31, 1999.

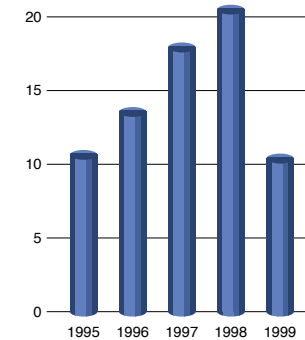
Net Sales

(¥ Billion)



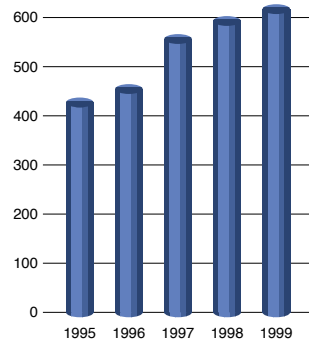
Net Income

(¥ Billion)



Total Assets

(¥ Billion)



Total Shareholders' Equity

(¥ Billion)

