

Investor Information (As of March 31, 2007)

Corporate Head Office

TOYOTA INDUSTRIES CORPORATION
 2-1, Toyoda-cho, Kariya-shi, Aichi-ken, 448-8671, Japan
 Telephone: +81-(0)566-22-2511
 Facsimile: +81-(0)566-27-5650

Date of Establishment

November 18, 1926

Common Stock

No par value
 Authorized: 1,100,000,000 shares
 Issued: 325,840,640 shares

Stock Exchange Listings

Tokyo, Osaka and Nagoya (Ticker Code: 6201)

Number of Shareholders

19,474

Independent Accountants

PricewaterhouseCoopers Aarata
 JR Central Towers 33rd Floor, 1-1-4, Meieki, Nakamura-ku,
 Nagoya-shi, Aichi-ken, 450-6033, Japan

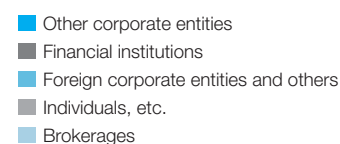
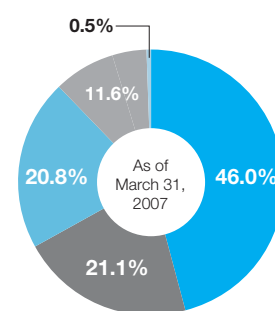
Transfer Agent

Mitsubishi UFJ Trust and Banking Corporation
 1-4-5, Marunouchi, Chiyoda-ku, Tokyo-to, 100-8212, Japan
 Telephone: +81-(0)3-3212-1211

Major Shareholders (Top 10) (As of March 31, 2007)

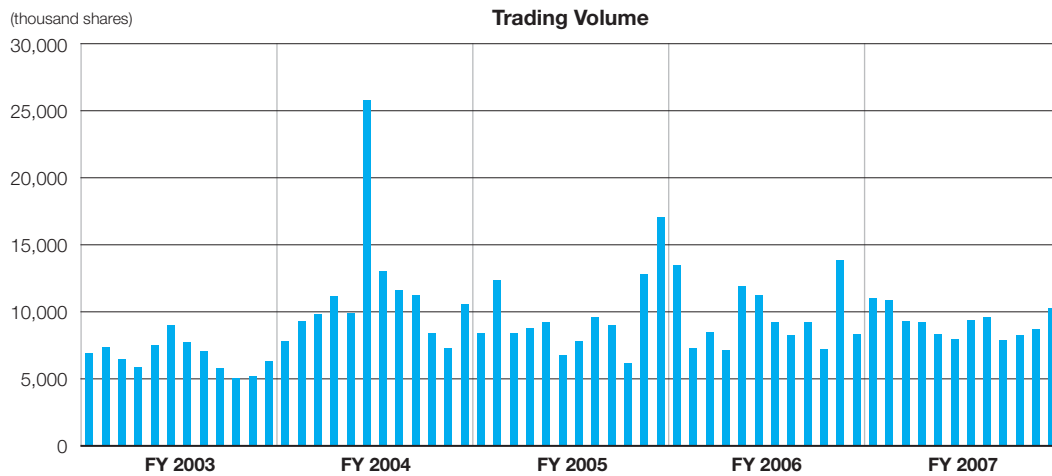
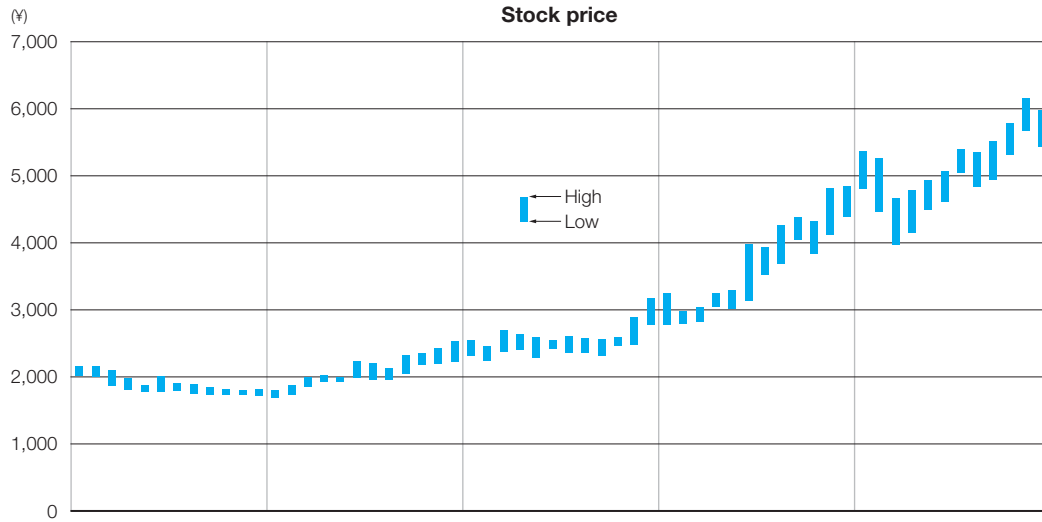
| | |
|---|------------------------------|
| Toyota Motor Corporation | 76,600 (Thousands of shares) |
| DENSO Corporation | 29,647 |
| Towa Real Estate Co., Ltd. | 15,697 |
| Third Avenue Fund-Custodial Trust Company | 14,747 |
| The Master Trust Bank of Japan, Ltd. | 10,887 |
| Toyota Tsusho Corporation | 8,289 |
| Nippon Life Insurance Company | 6,735 |
| HSBC Bank PLC-Clients Nontax Treaty | 6,655 |
| Aisin Seiki Co., Ltd. | 6,578 |
| State Street Bank and Trust Company | 6,401 |

Distribution of Shares



Common Stock Price and Trading Volume

(Tokyo Stock Exchange)



| | FY 2003 | FY 2004 | FY 2005 | FY 2006 | FY 2007 |
|-------------|---------|---------|---------|---------|---------|
| High | ¥2,165 | ¥2,530 | ¥3,180 | ¥4,850 | ¥6,160 |
| Low | 1,725 | 1,686 | 2,235 | 2,780 | 3,980 |
| At Year-End | 1,755 | 2,475 | 3,020 | 4,810 | 5,580 |



TOYOTA INDUSTRIES CORPORATION

2-1, Toyoda-cho, Kariya-shi, Aichi-ken 448-8671, Japan

Telephone: +81-(0)566-22-2511 Facsimile: +81-(0)566-27-5650

www.toyota-industries.com



This annual report is printed on recycled paper using soy ink to minimize the impact on the environment.

Printed in Japan